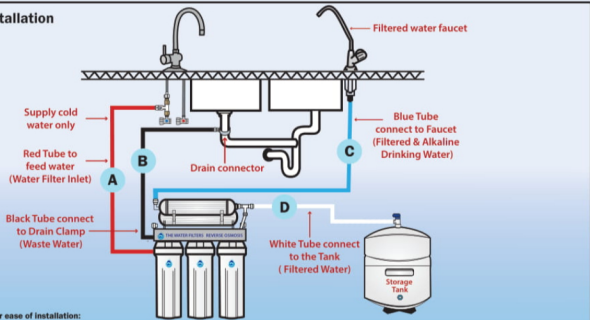




PLEASE READ THIS MANUAL CAREFULLY BEFORE INSTALLATION

Step by Step Installation



All tubing is colour coded for ease of installation:

- A** Red connects the feed water valve to the RO pre-filter.
- B** Black connects the membrane brine port to the drain connector.
- C** Blue connects the post filter to the faucet.
- D** White connects the RO membrane pure water outlet to the storage tank

Specifications: RO System Dimensions (cm) - 36W x 48H x 18D (Without Alkalizer - 36W x 40H x 18D)

Tank Dimensions (cm) - 8L - 35H x 23D, 12L - 40H x 25D, 18L - 41H x 29D, 35L - 57H x 33D & 80L - 83H x 40D

1 Installing your RO System - Taking into consideration ease of maintenance, find a convenient location beneath the benchtop. Using the selftapping screws provided, attach the filter to the cupboard wall (allowing approx 50mm height for changing cartridges)

2 Shut Off the Water Supply - Locate the water shut-off valve (ministop valve, see **Diagram 2**) for the cold water feed line. (To identify the hot and cold water pipes, turn on both the hot and cold water faucets. After the water is warm to the touch, feel the pipes under the sink)

Close the cold water shut off valve. Turn on the cold water faucet only to assure that the line is completely shut off and drained. (If there is no cold water shut off valve located under the sink, then turn off the main water supply at the entry to the house)

WARNING: Feeding the system with hot water will damage the membrane.

3 Attach Swivel Compression Tee (see Diagram 2) - Unscrew braided hose from ministop valve. Screw in the swivel compression tee. Reattach braided hose. (Please check other types of connectors as well which is, Easy fit 1/2" to 1/4" with Ball valve or Easy fit Laundry 3/4" to 1/4" connector with Ball valve)

4 Installing the Drain Outlet Clamp Assembly (see Diagram 3) - Select a location for the drain clamp above the 'S' Trap. Position the drain clamp on the drain pipe. Allow adequate space for drilling.

Tighten the clamp with the "Tightening Screw". Unscrew Quick Fit Connector. Using the opening in the drain clamp, drill a 1/4" hole in the drain pipe. Clean debris from the clamp. Reattach Quick Fit Connector

NOTE: Locate the drain connection away from the electric garbage disposal.

Diagram 2 - Tee Piece Assembly

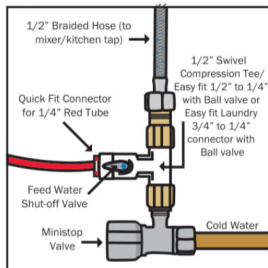
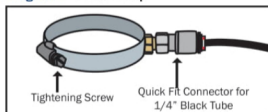


Diagram 3 - Drain Clamp



PLEASE READ THIS MANUAL CAREFULLY BEFORE INSTALLATION

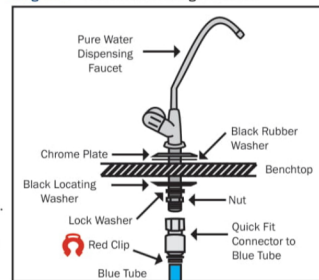
5 Pure Water Dispensing Faucet Installation

The pure water faucet may be installed on any flat surface over 50mm (2") in diameter. (Remember: check the underside of the location for interference). Make a small indent using a centre punch to mark the desired drilling location. Drill a pilot hole with a metal drill. Enlarge the hole using a 1/2" metal drill bit.

Once the hole has been drilled install the faucet as per **Diagram 4**. Be sure the faucet body, chrome plate, and the black rubber washer are placed above the sink. Install the black locating washer, the lock washer and nut underneath, then tighten firmly while aligning faucet in the desired direction.

Install female Quick Fit Connector to the end of the faucet (see **Diagram 4**).

Diagram 4 - Your choice of designer faucets



6 Storage Tank - Place the storage tank in a convenient position. The tank can be placed either upright or on its side. Attach the Storage Tank Tap using a few wraps of plumbers tape.

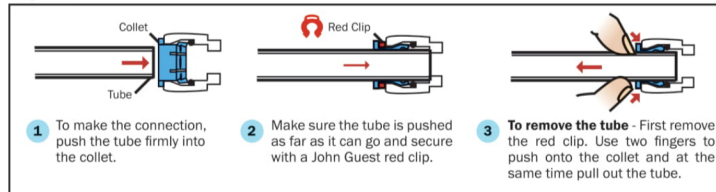
WARNING: Do not over tighten the tap when attaching to the tank thread. Over tightening may split the tap body resulting in a leak.

7 Connect Hosing to System - Please refer to **Diagram 5**. It is recommended to **not** shorten the tubes.

Make sure the end of the tube is cut straight, ensuring it has an even, clean surface.



Diagram 5



8 Activating the System for the First Time - Ensure storage tank tap and pure water faucet are turned off. Slowly turn the ministop valve until fully open and then check the plumbing assembly, RO system and drain lines are secure and free from leakage.

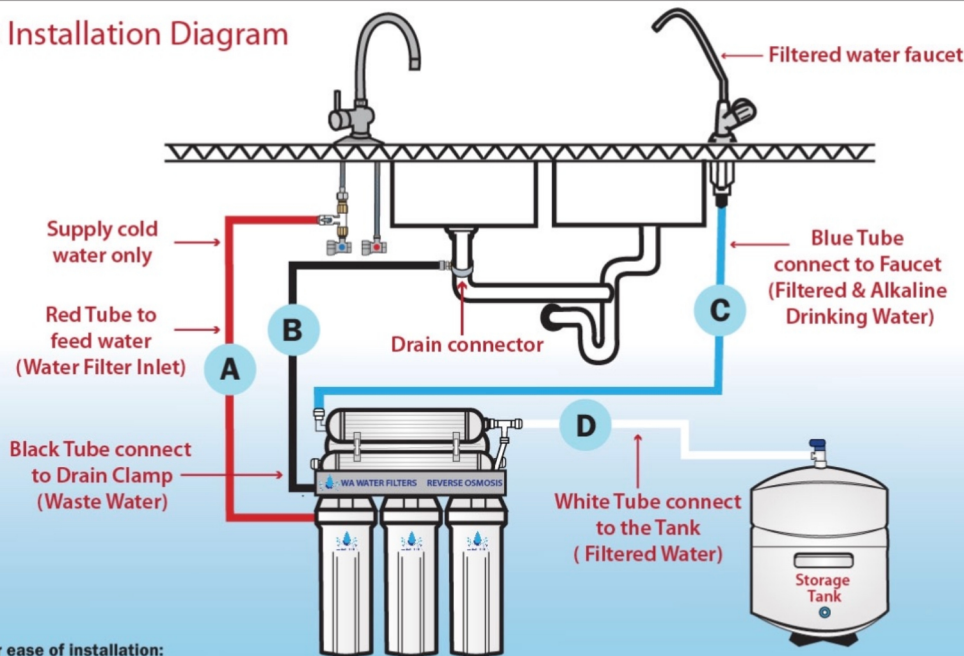
If system is free from leakage, open the pure water faucet and wait until the tap starts dripping. When dripping occurs, open up the tank tap and close the pure water faucet. Wait a few hours for the storage tank to fill (the time taken will depend on water pressure, temperature and tank size).

Open the Pure Water Faucet and let the water flow until all the air has been expelled from the system. Initially water may be slightly discoloured and have some aeration. This will take a few minutes. Close the pure water faucet. In 15 minutes, check the connections for leaks and correct if necessary.

NOTE: When away for extended periods of time, shut off the water supply (see Step 2).



Reverse Osmosis Installation Diagram



All tubing is colour coded for ease of installation:

- A Red** connects the feed water valve to the RO pre-filter.
- B Black** connects the membrane brine port to the drain connector.
- C Blue** connects the post filter to the faucet.
- D White** connects the RO membrane pure water outlet to the storage tank

Specifications: RO System Dimensions (cm) - 36W x 48H x 18D (Without Alkalizer - 36W x 40H x 18D)

Tank Dimensions (cm) - 8L - 35H x 23D, 12L - 40H x 25D, 18L - 41H x 29D, 35L - 57H x 33D & 80L - 83H x 40D